

## Refined personality, evolved security

<b>Burglar Resistance</b>	Class <b>3</b> ENV 1627 standard
<b>Acoustic insulation</b>	Rw <b>41</b> dB
<b>Thermal</b>	$U_g = 1,3$ W/m <sup>2</sup> K

Simple lines and coplanar surfaces flush with the wall or frame offer no distraction to the eye by hinges or door rebates. Acoustic and thermal insulation together with latest generation motorized electronic or cylinder-type locking systems managed by keypad, transponder, or app: Nuova Elegance security doors express the latest trends in interior design for the greatest comfort and the most advanced security.

### Electronically controlled motorized lock

This model comes with a new generation electronically controlled motorized lock.

The bolts and latch bolt retract and exit automatically. Opening and closing can be initiated from outside by typing a personal code into the numeric keypad or approaching a transponder key to the door and from the inside by merely pressing a button.

Particularly suited for domestic use, this model is designed for easy daily operation and programming.

A transponder reader on the door's external side receives and decodifies the signal sent by special card keys. An internal escutcheon with buttons for opening and the programming of the various operational modes is positioned on the door's internal side.



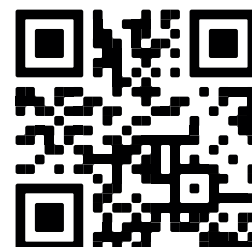
Dual screen insulation – internal insulation of rockwool and the additional insulation panel under the external panel– provides very high performance even in terms of comfort.

The leaf is equipped with three large fixed dog bolts welded to the external sheet and two sturdy hidden hinges inserted in the frame when closed, making the leaf's internal side flush with its surroundings. The various Nuova Elegance installation configurations can include coplanar panels flush with the frame or frame covers.

These doors can be bevelled towards the frame and flush to the wall.

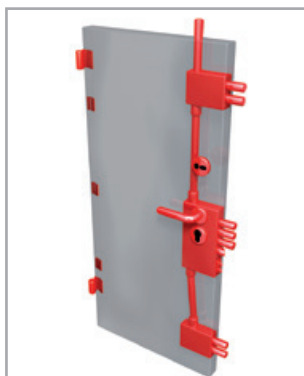


FOR INFORMATION ABOUT OUR ELECTRONICALLY CONTROLLED MOTORIZED LOCK AND AVAILABLE VARIOUS CONFIGURATION VISIT OUR WEB SITE



QU CODE

## Technical characteristics



Motorized security lock with mechanical system equipped with Europrofile cylinder for emergency operation. Four different configurations available. **Single and double doors, standard sizes.**

### LEAF

- Structure in double galvanized steel sheet, reinforced with internal vertical strengtheners.
- External steel sheet 12/10, internal steel sheet 10/10.
- Insulation in fire-resistant material.
- Coextruded MEGOL gasket on three sides.
- 3 specially stamped dog bolts 50 x 8 mm.
- Concealed adjustable hinges on double axis.
- Lock protection plate in anti-drill steel.
- Wide-angle door view.
- Adjustable drop seal.
- Internal and External handles available in different styles and finishes.
- Maximum angle of opening 105°.

### FRAME AND SUBFRAME

- 30/10 rolled steel subframe; **BIG type**.
- 20/10 double rebated special flush frame, RAL 9006 painted with epoxy powders for outdoor, available in different colors; equipped with coextruded rebated gasket.
- Frame and subframe adjustable on 3 axes (height, depth, width) for quick and easy installation.

### LOCKING SYSTEM

- Motorized security lock. Four versions available with different programmable operating configurations and combinable devices.
- The motor activates the three central locking bolts, the latch bolt and two double bolts, one higher one lower, and the vertical top bolt.
- The mechanical system for emergency operation is activated by Euro profile cylinder, protected by anti-extraction and anti-drill cylinder protection device.

### COVERING PANELS

- The panels can be selected among plain panels range, solid wood, milled panels, aluminum and so on.
- Internal panel fastened to leaf by special aluminum profiles removable for easy access to lock.
- Inox external panel-keeper surrounds.

### OPTIONS AND SPECIAL VERSIONS

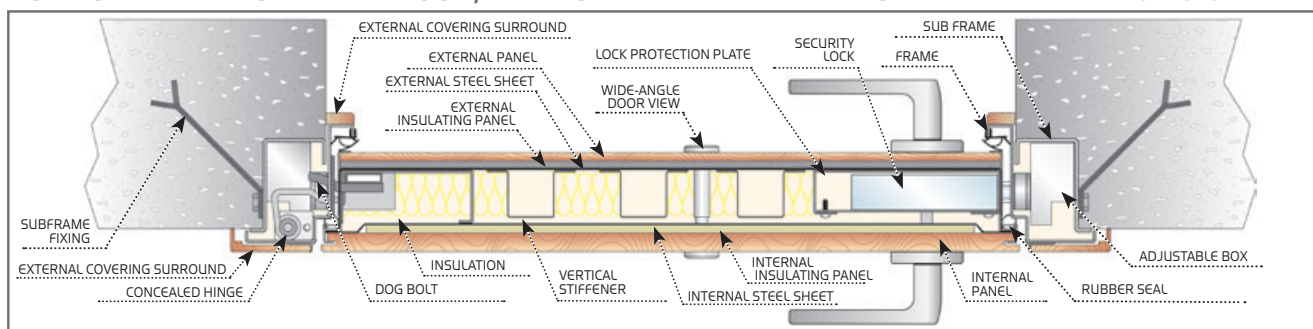
- Leaf complanar with surrounds version.
- Leaf complanar with to frame version.
- Leaf complanar with wall or boiserie version.

### PERFORMANCE TABLE

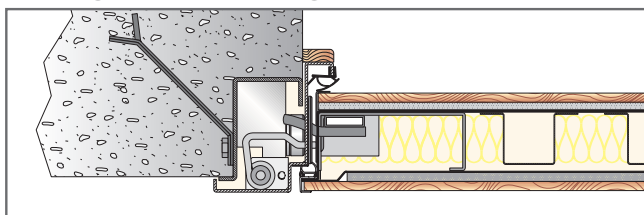
LEAF	BURGLAR RESISTANCE	THERMAL INSULATION $U_g$ (W/m <sup>2</sup> K)	ACOUSTIC INSULATION Rw (dB)	WIND RESISTANCE (class)	AIR TIGHTNESS (class)	WATER TIGHTNESS (class)
1	Class 4	<b>1,3</b> 1,4 With aluminum external panel	<b>43</b>	<b>C3</b>	<b>1</b>	<b>n.p.d.</b>
2	Class 3	<b>1,5</b> 1,6 With aluminum external panel	<b>32</b>	<b>C3</b>	<b>1</b>	<b>n.p.d.</b>

n.p.d.: no performance declared. Thermal transmission values given refer to door covered with plain wooden panels 7 mm thickness and vary depending on the finishes and options required.

### HORIZONTAL SECTION SINGLE DOOR, LEAF COPLANAR WITH SURROUNDS - Indicative section not on scale.



### LEAF COPLANAR WITH TO FRAME



### LEAF COPLANAR WITH WALL OR BOISERIE

