

Refined personality, evolved security

| | |
|----------------------------|-----------------------------------|
| Burglar Resistance | Class 4 ENV 1627 standard |
| Acoustic insulation | Rw 43 dB |
| Thermal | U _g = 1,3 W/m²K |

Simple lines and coplanar surfaces flush with the wall or frame offer no distraction to the eye by hinges or door rebates. Acoustic and thermal insulation together with latest generation motorized electronic or cylinder-type locking systems managed by keypad, transponder, or app: Nuova Elegance security doors express the latest trends in interior design for the greatest comfort and the most advanced security.

Double locking, multiple functions

One security lock with a Tortero & Re Smart, Excel o Prestige Euro profile cylinder equipped with special Tortero & Re patented anti-tear, anti-drill and anti-extraction device that blocks the system in case of forced extraction of the cylinder, and a secondary lock with cylinder that is very useful to restrict access to

individuals, for example employees: it moves the latch bolt and the locking bolt in order to block also the main lock. On request, the standard cylinder of the secondary lock can be replaced by an Euro profile cylinder equipped with anti-drill and anti-extraction protection device.



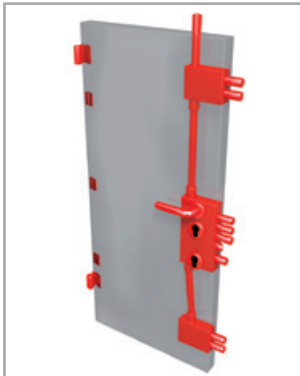
It is also possible to key both cylinders so that a single master key operates both mechanisms and the service key operates only one. Special large-sized shaped bolts offer greater resistance against break-in attempts.

Dual screen insulation – internal insulation of rockwool and the additional insulation panel under the internal and external panels – provides very high performance even in terms of comfort. The leaf is equipped with three large fixed dog bolts welded to the external sheet and two sturdy invisible hinges inserted in the frame when closed, making the leaf's internal side



flush with its surroundings. The various Nuova Elegance installation configurations can include coplanar panels flush with the frame or frame covers. These doors can be bevelled towards the frame and flush to the wall.

Technical characteristics



Euro profile cylinder security lock and secondary lock standard equipped with service cylinder.
Available in standard and customized sizes, single or double doors.

LEAF

- Structure in double galvanized steel sheet, reinforced with internal vertical strengtheners.
- External steel sheet 12/10, internal steel sheet 10/10.
- Insulation in fire-resistant material.
- Coextruded MEGOL gasket on three sides.
- 3 specially stamped dog bolts 50 x 8 mm.
- Concealed adjustable hinges on double axis.
- Lock protection plate in anti-drill steel.
- Wide-angle door view.
- Adjustable drop seal.
- Internal and External handles available in different styles and finishes.
- Maximum angle of opening 105°.

FRAME AND SUBFRAME

- 30/10 rolled steel subframe; only **BIG** type available.
- 20/10 double rebated special flush frame, RAL 9006 painted with epoxy powders for outdoor, available in different colors; equipped with coextruded rebated gasket.
- Frame and subframe adjustable on 3 axes (height, depth, width) for quick and easy installation.

LOCKING SYSTEM

- Euro profile cylinder security lock.
- High security multipoint locking system. Large shaped locking bolts.
- Anti-extraction and anti-drill cylinder protection device.
- Secondary lock standard equipped with service cylinder: activates the latch bolt, one locking bolt and blocks the security lock.
- The lock can be equipped with European profile cylinders available in our price list and a temporary site cylinder as well.

COVERING PANELS

- The panels can be selected among plain panels range, solid wood, milled panels, aluminum and so on.
- Internal panel fastened to leaf by special aluminum profiles removable for easy access to lock.
- Inox external panel-keeper surrounds.

OPTIONS AND SPECIAL VERSIONS

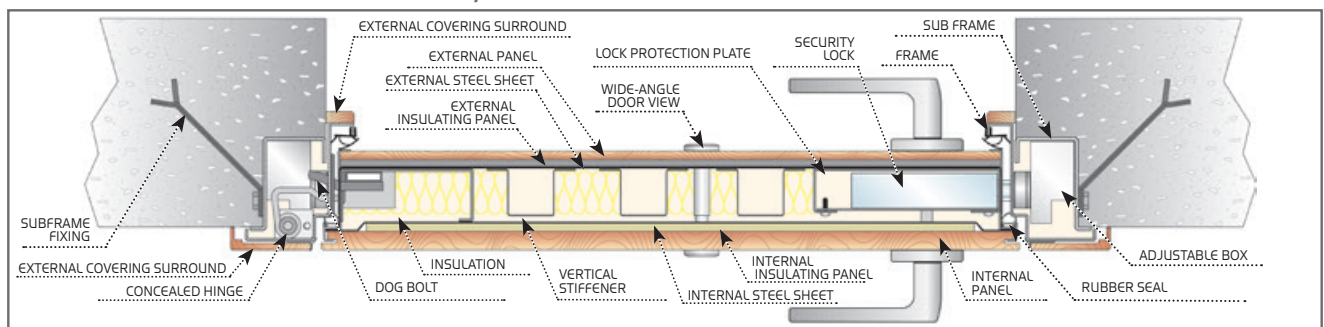
- Leaf complanar with surrounds version.
- Leaf complanar with to frame version.
- Leaf complanar with wall or boiserie version.

PERFORMANCE TABLE

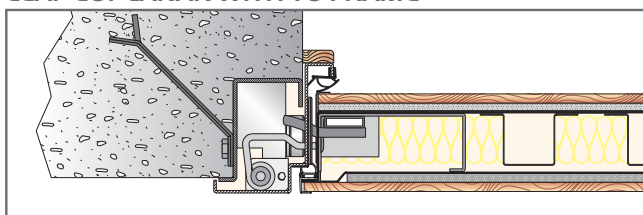
| LEAF | BURGLAR RESISTANCE | THERMAL INSULATION U_g (W/m ² K) | ACOUSTIC INSULATION R_w (dB) | WIND RESISTANCE (class) | AIR TIGHTNESS (class) | WATER TIGHTNESS (class) |
|------|--------------------|--|-----------------------------------|----------------------------|--------------------------|----------------------------|
| 1 | Class 4 | 1,3 1,4 With aluminum external panel | 43 | C3 | 1 | n.p.d. |
| 2 | Class 3 | 1,5 1,6 With aluminum external panel | 32 | C3 | 1 | n.p.d. |

n.p.d.: no performance declared. Thermal transmission values given refer to door covered with plain wooden panels 7 mm thickness and vary depending on the finishes and options required.

HORIZONTAL SECTION SINGLE DOOR, LEAF COPLANAR WITH SURROUNDS - Indicative section not on scale.



LEAF COPLANAR WITH TO FRAME



LEAF COPLANAR WITH WALL OR BOISERIE

